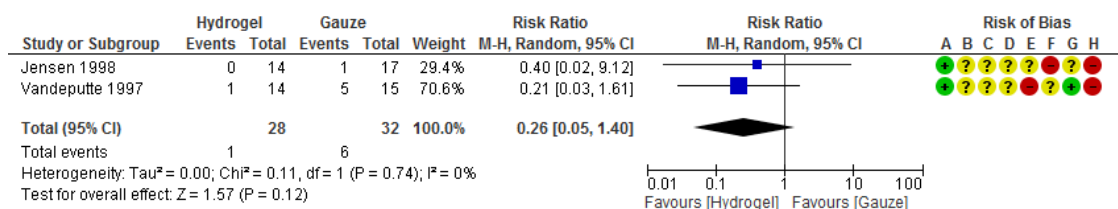


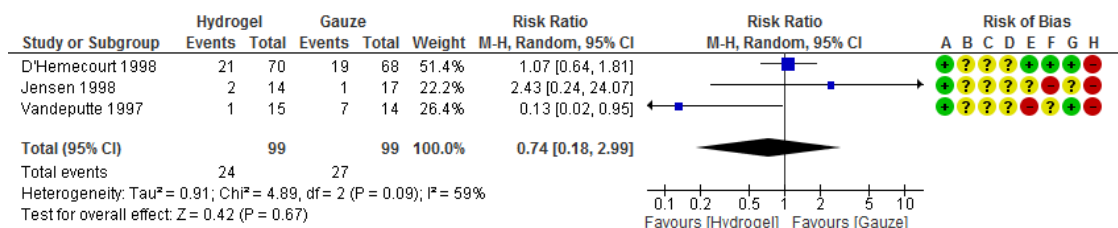
Appendix 4 Supplementary Figures



Risk of bias legend

- (A) Random sequence generation (selection bias)
- (B) Allocation concealment (selection bias)
- (C) Blinding (performance bias and detection bias): Blinding participants
- (D) Blinding (performance bias and detection bias): Blinding personnel delivering intervention
- (E) Blinding (performance bias and detection bias): Blinding outcome assessors
- (F) Incomplete outcome data (attrition bias)
- (G) Selective reporting (reporting bias)
- (H) Other bias

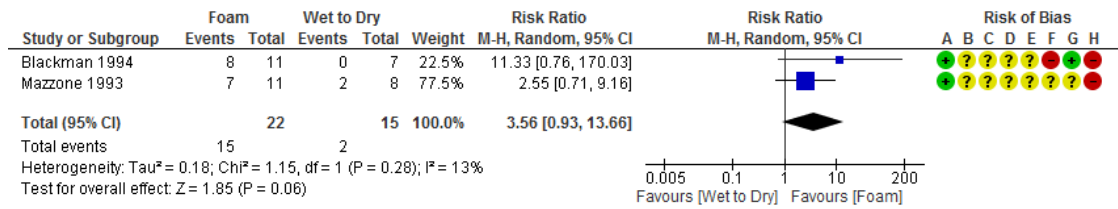
Supplementary Figure 1 Forest plot for comparison 6.1: Hydrogel compared with gauze or good wound care (gwc), outcome: Number of amputations reported. Data adapted from Jensen 1998 and Vandeputte 1997.



Risk of bias legend

- (A) Random sequence generation (selection bias)
- (B) Allocation concealment (selection bias)
- (C) Blinding (performance bias and detection bias): Blinding participants
- (D) Blinding (performance bias and detection bias): Blinding personnel delivering intervention
- (E) Blinding (performance bias and detection bias): Blinding outcome assessors
- (F) Incomplete outcome data (attrition bias)
- (G) Selective reporting (reporting bias)
- (H) Other bias

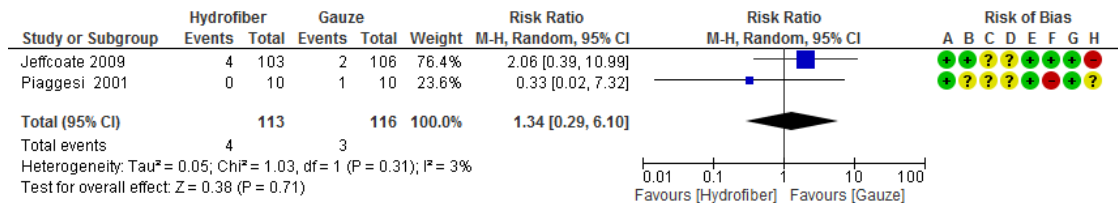
Supplementary Figure 2: Forest plot of comparison 6.2: Hydrogel compared with gauze or good wound care (gwc), outcome: Number of Infections reported. Data adapted from D'Hemecourt 1998, Jensen 1998 and Vandeputte 1997.



Risk of bias legend

- (A) Random sequence generation (selection bias)
- (B) Allocation concealment (selection bias)
- (C) Blinding (performance bias and detection bias): Blinding participants
- (D) Blinding (performance bias and detection bias): Blinding personnel delivering intervention
- (E) Blinding (performance bias and detection bias): Blinding outcome assessors
- (F) Incomplete outcome data (attrition bias)
- (G) Selective reporting (reporting bias)
- (H) Other bias

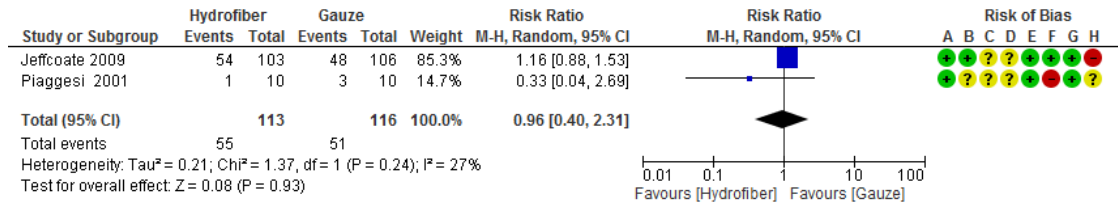
Supplementary Figure 3: Forest plot for comparison 10.1 Foam dressing compared with Wet to Dry Saline, outcome: Number of ulcers completely healed. Blackman 1994 and Mazzone 1993.



Risk of bias legend

- (A) Random sequence generation (selection bias)
- (B) Allocation concealment (selection bias)
- (C) Blinding (performance bias and detection bias): Blinding participants
- (D) Blinding (performance bias and detection bias): Blinding personnel delivering intervention
- (E) Blinding (performance bias and detection bias): Blinding outcome assessors
- (F) Incomplete outcome data (attrition bias)
- (G) Selective reporting (reporting bias)
- (H) Other bias

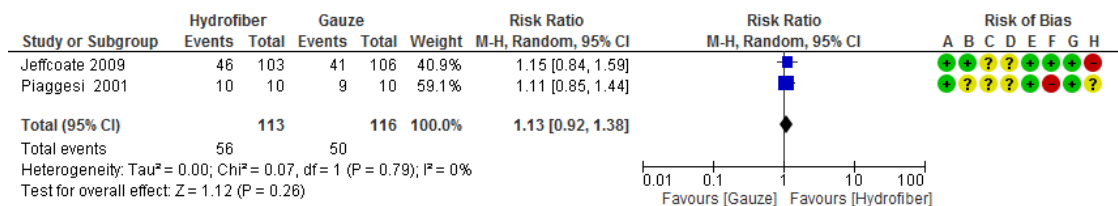
Supplementary Figure 4: Analysis Forest plot for comparison 13.1: Hydrofiber compared with gauze dressing, outcome: Number of amputations reported. Data adapted from Jeffcoate 2009 and Piaggese 2001.



Risk of bias legend

- (A) Random sequence generation (selection bias)
- (B) Allocation concealment (selection bias)
- (C) Blinding (performance bias and detection bias): Blinding participants
- (D) Blinding (performance bias and detection bias): Blinding personnel delivering intervention
- (E) Blinding (performance bias and detection bias): Blinding outcome assessors
- (F) Incomplete outcome data (attrition bias)
- (G) Selective reporting (reporting bias)
- (H) Other bias

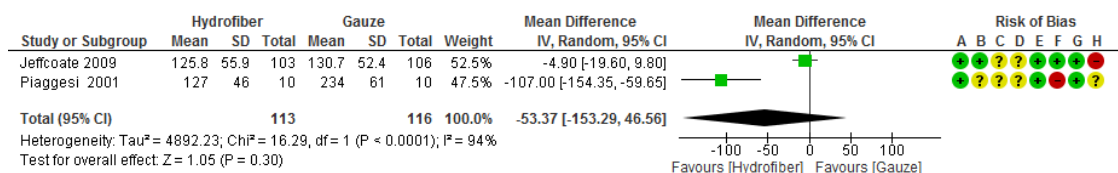
Supplementary Figure 5: Forest plot for comparison 13.2: Hydrofiber compared with gauze dressing, outcome: Number of Infections reported. Data adapted from Jeffcoate 2009 and Piaggese 2001.



Risk of bias legend

- (A) Random sequence generation (selection bias)
- (B) Allocation concealment (selection bias)
- (C) Blinding (performance bias and detection bias): Blinding participants
- (D) Blinding (performance bias and detection bias): Blinding personnel delivering intervention
- (E) Blinding (performance bias and detection bias): Blinding outcome assessors
- (F) Incomplete outcome data (attrition bias)
- (G) Selective reporting (reporting bias)
- (H) Other bias

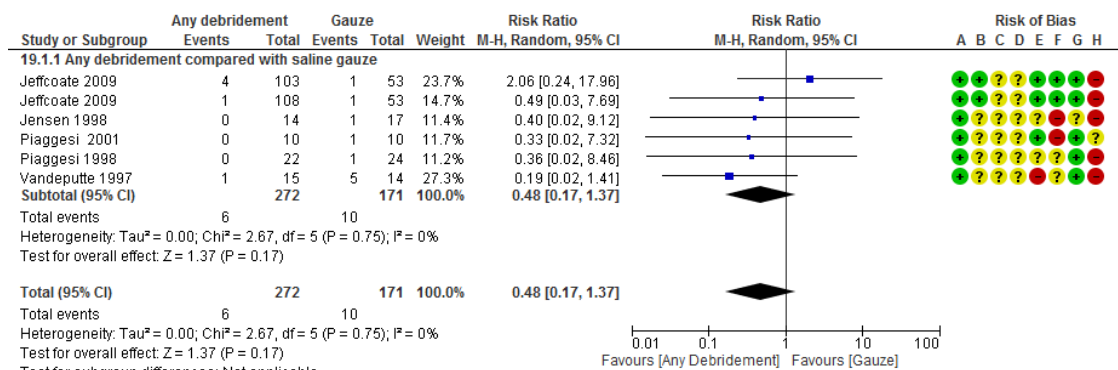
Supplementary Figure 6: Forest plot of comparison 13.4: Hydrofiber compared with gauze dressing, outcome: Number of ulcers completely healed. Data adapted from Jeffcoate 2009 and Piaggese 2001.



Risk of bias legend

- (A) Random sequence generation (selection bias)
- (B) Allocation concealment (selection bias)
- (C) Blinding (performance bias and detection bias): Blinding participants
- (D) Blinding (performance bias and detection bias): Blinding personnel delivering intervention
- (E) Blinding (performance bias and detection bias): Blinding outcome assessors
- (F) Incomplete outcome data (attrition bias)
- (G) Selective reporting (reporting bias)
- (H) Other bias

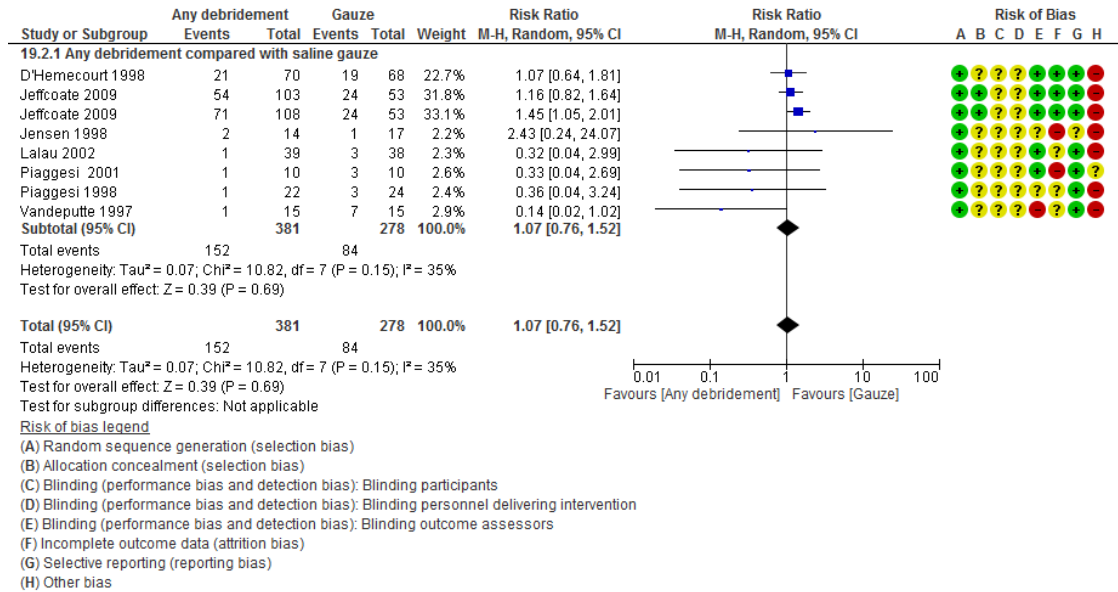
Supplementary Figure 7: Forest plot for comparison 13.5: Hydrofiber compared with gauze dressing, outcome: Time to complete healing (days). Data adapted from Jeffcoate 2009 and Piaggese 2001.



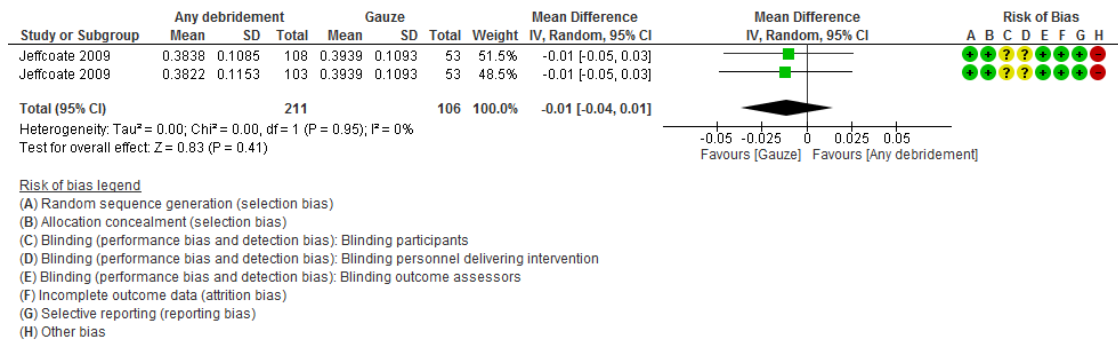
Risk of bias legend

- (A) Random sequence generation (selection bias)
- (B) Allocation concealment (selection bias)
- (C) Blinding (performance bias and detection bias): Blinding participants
- (D) Blinding (performance bias and detection bias): Blinding personnel delivering intervention
- (E) Blinding (performance bias and detection bias): Blinding outcome assessors
- (F) Incomplete outcome data (attrition bias)
- (G) Selective reporting (reporting bias)
- (H) Other bias

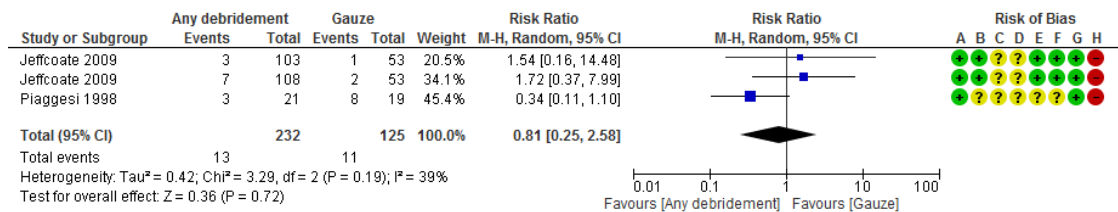
Supplementary Figure 8: Forest plot for comparison 19.1: Any debridement compared with saline gauze control, outcome: Number of amputations reported. Data adapted from Jeffcoate 2009, Jensen 1998, Vandeputte 1997, Piaggese 2001 and Piaggese 1998.



Supplementary Figure 9: Forest plot for comparison 19.2: Any debridement compared with saline gauze control, outcome: Number of Infections reported. Data adapted from D’Hemecourt 1998, Jeffcoate 2009, Jensen 1998, Lalau 2002, Vandeputte 1997, Piaggessi 1998 and Piaggessi 2001.



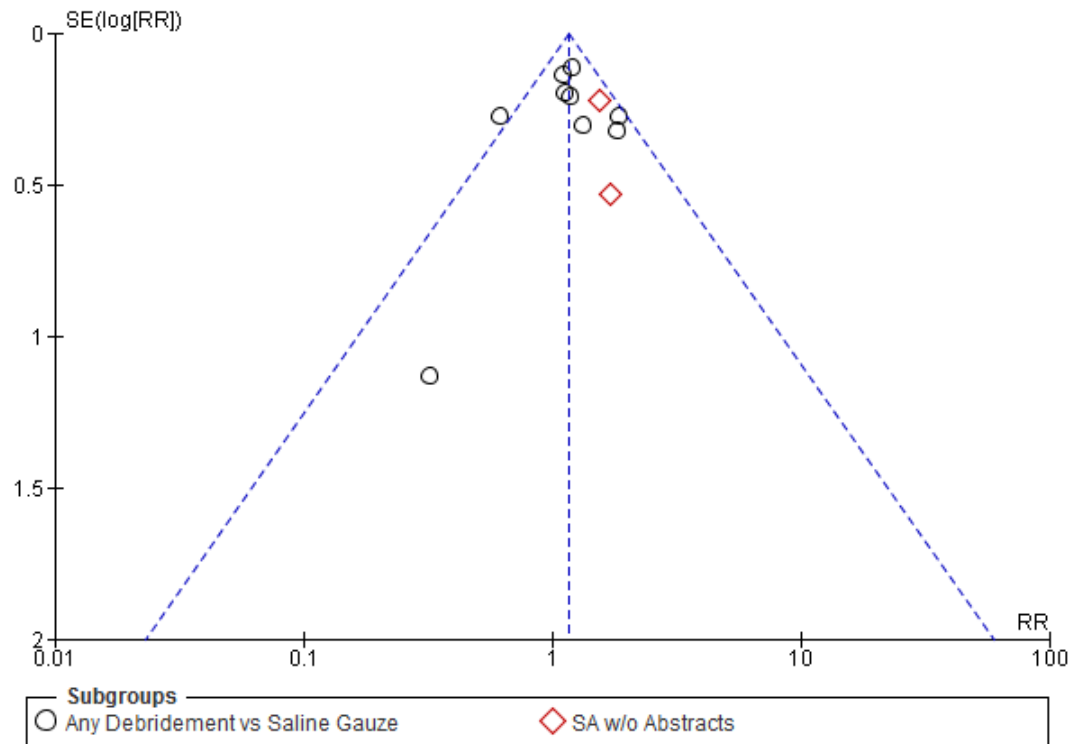
Supplementary Figure 10: Forest plot for comparison 19.4 Any debridement compared with saline gauze control, outcome: Quality of life. Data adapted from Jeffcoate 2009.



Risk of bias legend

- (A) Random sequence generation (selection bias)
- (B) Allocation concealment (selection bias)
- (C) Blinding (performance bias and detection bias): Blinding participants
- (D) Blinding (performance bias and detection bias): Blinding personnel delivering intervention
- (E) Blinding (performance bias and detection bias): Blinding outcome assessors
- (F) Incomplete outcome data (attrition bias)
- (G) Selective reporting (reporting bias)
- (H) Other bias

Supplementary Figure 11: Forest plot for comparison 19.6 Any debridement compared with saline gauze control, outcome: Recurrence rates. Data adapted from Jeffcoate 2009, Piaggese 1998 and Piaggese 2001.



Supplementary Figure 12 (Comparison 19.3): Funnel plot of comparison: 19 Any debridement compared with Saline Gauze, outcome: 19.3 Number of ulcers completely healed.